

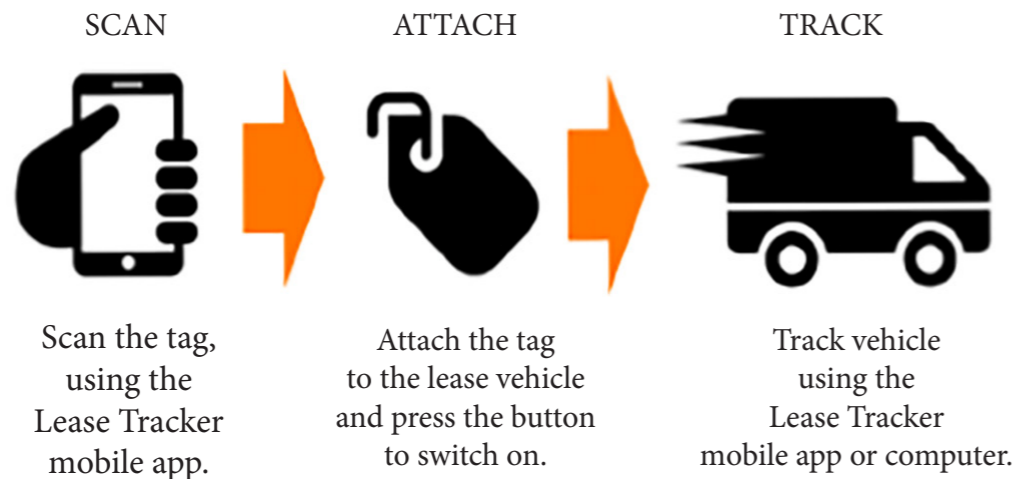
Lease TRACKER

Cost-effective fleet tracker for lease vehicles.

No monthly fees or service data costs.
Once installed and activated, Lease Tracker works for up to four years with no charging required.

Lease Tracker delivers real time knowledge about the location of each leased vehicle within the fleet. One simple monitoring system makes it easy to add more trackers to expand coverage for more vehicles. Intuitive mobile interface provides traceability through your smart phone, tablet or computer, with map and street-level views for instant visibility of any vehicle on lease.

How do I use Lease Tracker?



Connectivity, everywhere.

Lease Tracker uses worldwide 3G, GPS and Glonass tracking, and a Machine 2 Machine (M2M) chip. Stream Communications Limited, a global leader in satellite connectivity, delivers the end-to-end wireless network service for the M2M service. Lease Tracker is network agnostic and works across all the major mobile network operators services.

Cost-effective flexible vehicle tracking.

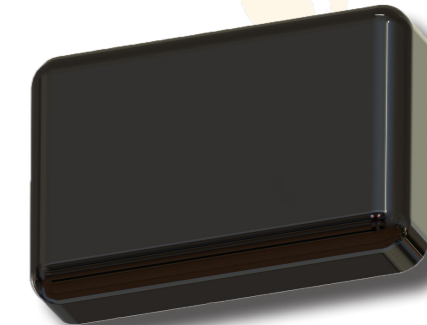
NO hidden costs or monthly fees. All network data charges included. Vehicle position is sent weekly, with battery status level. Updates are sent to the cloud first, and then any authorized mobile device or remote computer can connect to the cloud to view current vehicle locations and tracking. Can track a vehicle every second, minute or hour. If requested, Lease Tracker can track continuously for up to thirty days.

Forecourt security

The Lease Tracker operator can ring fence the forecourt area (creates a 'geozone' in the system) enabling 24/7 monitoring of any vehicle inside for up to four years with no battery charging. Any vehicle driven outside the area without pre-authorization triggers an alarm immediately at server level. This added security feature permits the rearranging of vehicles on the forecourt but not movement off the forecourt during designated parking times.

What is the technology inside?

Lease Tracker uses the latest Quad-band GSM/GPRS/EDGE 3G technology connectivity to ensure global coverage and operability, inside a very compact (75x45x34mm), water-resistant, lightweight tag that can be hidden anywhere inside the vehicle.



Simple, accurate, reliable

- Self contained tracker, works completely independent of vehicle electrical system.
- No set up required, simply touch or scan the Lease Tracker with mobile phone to install app.
- Accurate mapping to within ten metres.
- See location of all tracked vehicles in the fleet on a single mobile app, with map and street-level views.
- No charging required, can track a vehicle for up to four years with existing power charge.

Unique, innovative tracker

Lease Tracker is protected by a worldwide patent pending. There is no other long-lasting low-cost tracker that works universally to provide the lease vehicle operator with full visibility on the whereabouts of each vehicle in their fleet.

